



MOUSE UPDATE – July 2002

Trap success on the **Central Darling Downs** transect in July was 3.2%. From this figure, the Darling Downs Mouse Plague Model predicts that the probability of high mouse numbers next May is **HIGH**. Numbers are below average for this time of the year (see graph below). Of the 28 mice caught, 19 were sub-adult. The adult's consisted of 4 males and 7 non-pregnant females.

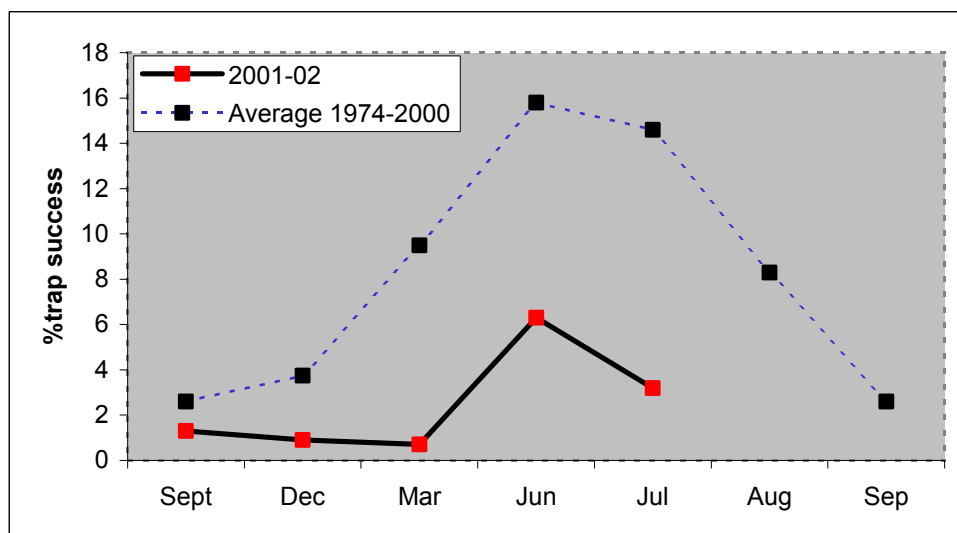


Figure caption: Percent trap success (number of mice caught per 100 traps) on the Central Darling Downs transect between September 2001 and July 2002 (solid line) and the average monthly value for the transect (dotted line).

Habitats : 30% of mice were caught in the unmown road verges, and 30% were caught in the wheat and corn stubble that had not been ploughed in. Cultivation that had been ploughed in and the short roadside verges had little mice activity.

Damage reports : No damage to crops have been reported to the Dalby office. A few reports of mice activity in chickpea crops, but at this stage there is no damage.

Weather : Conditions are very dry and cold.

Next Monitoring : September

Craig Hunter.
Land Protection Officer.
Natural Resources and Mines.
Dalby, Queensland.

Phone : 07 4669 9561
MOB : 0428725065
PO BOX 589 Dalby Q 4405