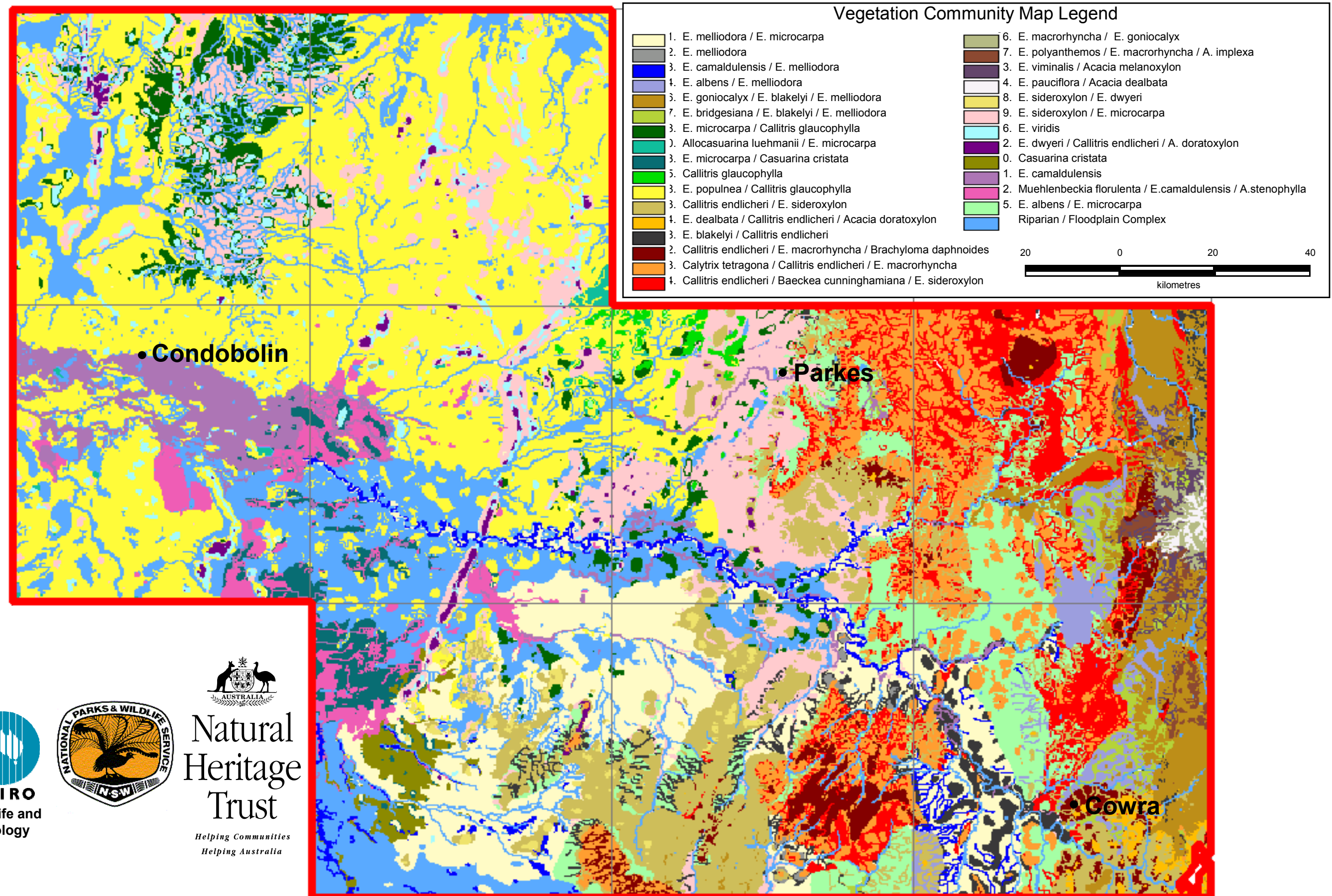


Predicted distribution of current vegetation communities in the central Lachlan region

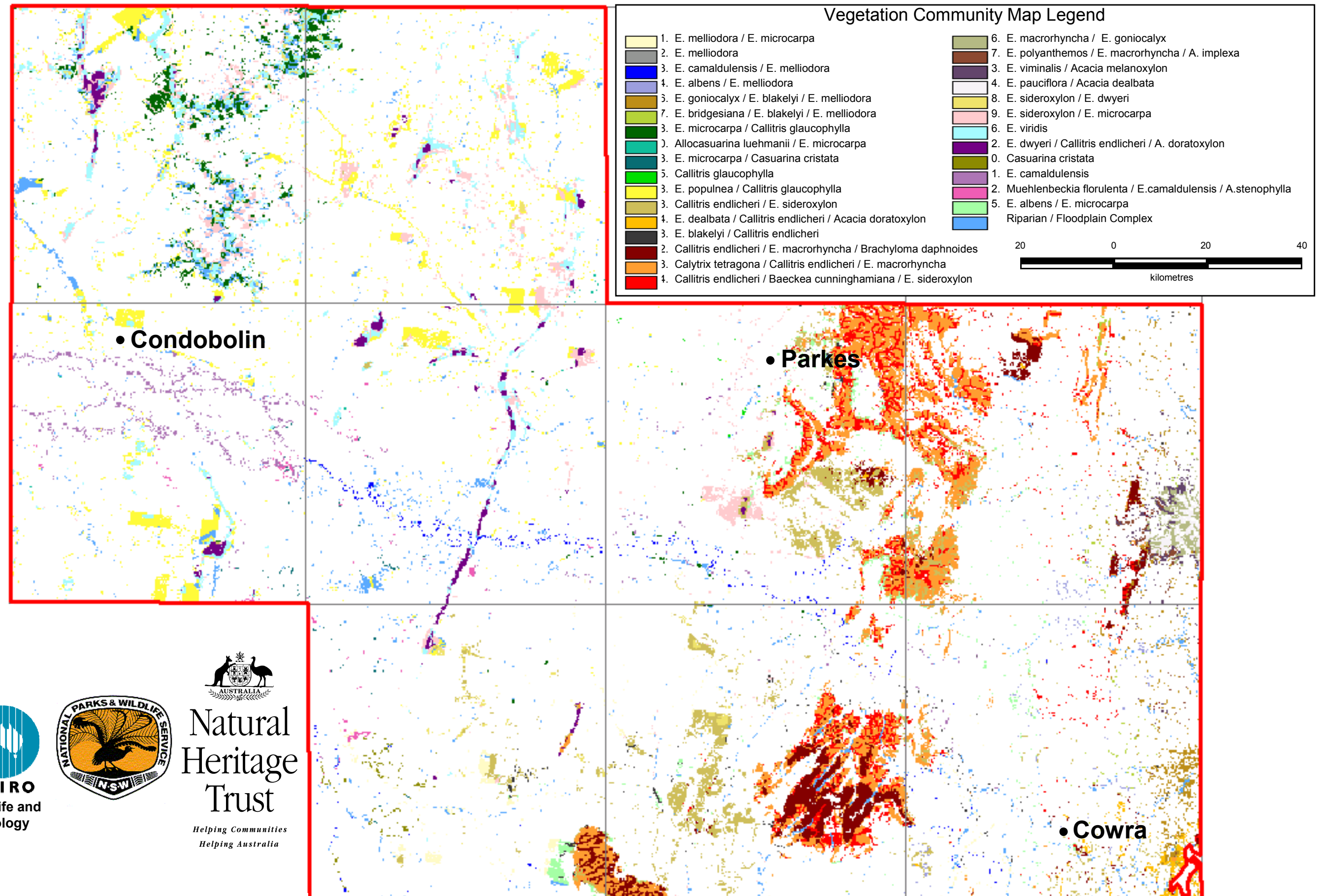
A product from the "Predicted Vegetation Cover in the Central Lachlan Region" Project funded by the Natural Heritage Trust



Disclaimer The information presented in this map should only be used within the limitations stipulated within the accompanying report. CSIRO and NSW NPWS does not accept any risks and responsibility for losses, damages, costs and other consequences resulting directly or indirectly from using any information or material presented in this map.

Predicted distribution of current vegetation communities on uncleared land (M305 mapping) in the central Lachlan region

A product from the "Predicted Vegetation Cover in the Central Lachlan Region" Project funded by the Natural Heritage Trust



Disclaimer The information presented in this map should only be used within the limitations stipulated within the accompanying report. CSIRO and NSW NPWS does not accept any risks and responsibility for losses, damages, costs and other consequences resulting directly or indirectly from using any information or material presented in this map.

Comparison of community composition of predicted vegetation of the central Lachlan region with existing remnants based on M305 mapping

A product from the “Predicted Vegetation Cover in the Central Lachlan Region” Project funded by the Natural Heritage Trust

| Alliance | Community ** | Potential wooded area (km2) A | Present wooded area (km2) B | Remaining wooded area (%) (B/A) * 100 |
|---|---|----------------------------------|-----------------------------------|---|
| 1 Eucalyptus melliodora | 1 E. melliodora / E. microcarpa | 1552 | 46 | 3 |
| | 2 E. melliodora | 22 | 2 | 8 |
| | 3 E. camaldulensis / E. melliodora | 260 | 26 | 10 |
| | 4 E. albens / E. melliodora | 262 | 12 | 4 |
| 2 Eucalyptus melliodora/ E. blakelyi | 6 E. goniocalyx / E. blakelyi / E. melliodora | 755 | 68 | 9 |
| | 7 E. bridgesian / E. blakelyi / E. melliodora | 172 | 13 | 8 |
| 3 Eucalyptus microcarpa | 8 E. microcarpa / Callitris glaucophylla | 547 | 115 | 21 |
| | 10 Allocasuarina luehmanii / E. microcarpa | 59 | 2 | 3 |
| | 13 E. microcarpa / Casuarina cristata | 277 | 6 | 2 |
| 5 Callitris glaucophylla | 15 Callitris glaucophylla / E. albens | 67 | 1 | 2 |
| 6 Eucalyptus populnea | 18 E. populnea / Callitris glaucophylla | 5202 | 340 | 7 |
| 7 Callitris endlicheri | 23 Callitris endlicheri / E. sideroxylon | 1557 | 305 | 20 |
| | 24 E. dealbata/C. endlicheri/A. doratoxylon | 92 | 23 | 25 |
| 8 Eucalyptus blakelyi / E. macrorhyncha | 28 E. blakelyi / Callitris endlicheri | 381 | 20 | 5 |
| 9 Callitris endlicheri / E. macrorhyncha | 32 Callitris endlicheri / E. macrorhyncha | 393 | 224 | 57 |
| | 33 Calytrix tetragona / C. endlicheri / E. macrorhyncha | 1232 | 607 | 49 |
| | 34 C.endlicheri / Baeckea cunninghamiana / E. sideroxylon | 1063 | 280 | 26 |
| 10 E. macrorhyncha | 36 E. macrorhyncha / E. goniocalyx | 76 | 37 | 48 |
| | 37 E. polyanthemos/E. macrorhyncha/E. albens | 75 | 10 | 13 |
| 11 Eucalyptus pauciflora / E. viminalis | 43 E. viminalis / Acacia melanoxylon | 107 | 24 | 23 |
| | 44 E. pauciflora / Acacia dealbata | 35 | 26 | 73 |
| 14 Eucalyptus sideroxylon | 48 E. sideroxylon / E. dwyeri | 128 | 43 | 34 |
| | 49 E. sideroxylon / E. microcarpa | 1773 | 223 | 13 |
| 15 E. viridis / E. socialis / E. dumosa (Mallee) | 56 E. viridis | 413 | 201 | 49 |
| 16 Eucalyptus dwyeri | E. dwyeri / Callitris endlicheri / A. doratoxylon | 97 | 67 | 68 |
| 19 Casuarina cristata | 70 Casuarina cristata /E. camaldulensis | 160 | 9 | 6 |
| 20 E. camaldulensis | 71 E. camaldulensis | 645 | 64 | 10 |
| | 72 Muehlenbeckia florulenta / E. camaldulensis/ A. stenophylla | 445 | 15 | 3 |
| | 75 E. albens / E. microcarpa | 1027 | 59 | 6 |
| 21 Eucalyptus albens Riparian / floodplain | 76 Riparian / floodplain complex | 3430 | 229 | 7 |
| Total of all alliances | | 41184 | 5964 | 14 |

** only those communities that were able
to be mapped are represented

≤ 10 % community remaining: **RED**
≥ 30 % community remaining: **GREEN**

Disclaimer The information presented in this table should only be used within the limitations stipulated within the accompanying report. CSIRO and NSW NPWS does not accept any risks and responsibility for losses, damages, costs and other consequences resulting directly or indirectly from using any information or material presented in this table.



CSIRO
Wildlife and
Ecology




**Natural
Heritage
Trust**
Helping Communities
Helping Australia