



## GSLib2Grid – User instructions

The **GSLib2Grid** tool converts **GSLib** format files, which are output from the **Stanford Geostatistical Modeling Software (S-GeMS; <http://sgems.sourceforge.net/>)**, into **ESRI** grid files.

**GSLib2Grid** is useful when needing use the outputs of **S-GeMS** in **ArcGIS**.

### System requirements

Microsoft .Net Framework version 2

### Last update

20 December 2006

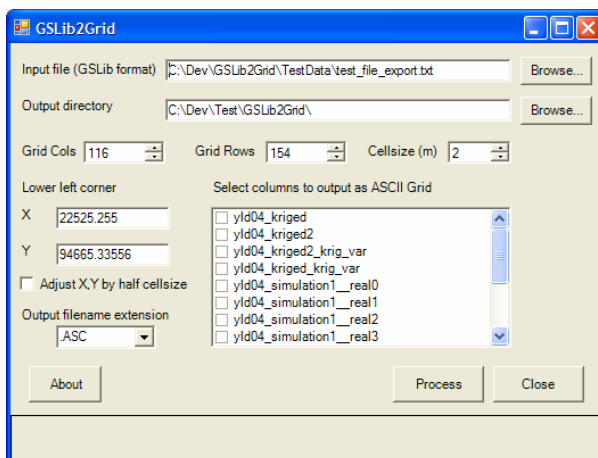
### Installation

An installation program is provided. To install the tool, locate and run the **setup.exe** file (or **GSLib2Grid.msi** file). Step through the installation program, accepting the default settings. After installation the tool can be launched from the Windows XP Start menu under All Programs, CSIRO Precision Ag Tools.

### Using the program

To convert a **GSLib** file:

- Use the **Browse...** buttons to locate an input file and set an output directory.
- The number of rows, columns and grid size cannot be determined automatically from the **GSLib** file so needs to be specified. This will depend on the data used to generate the **GSLib** file.
- Likewise, the **X** and **Y** coordinates of the lower left corner need to be entered. If the “Adjust **X,Y** by half cell size” check box is checked, the output cell coordinates will be shifted up and right by half the cell size.
- In the list of columns, tick any of the column names for which you want a grid file created.
- Click “**Process**” to create the **Ascii** Grid file. The status bar will show the row number being processed, then will show “**Done**” when completed.



- Click **Close** to exit the program. Your settings will be saved and reloaded the next time you use the tool.

The **GSLib2Grid** main form

## Maintenance

This tool was developed to assist with Precision Viticulture research in June 2006. For queries, please contact David Gobbett from CSIRO Sustainable Ecosystems.

## Notice

© CSIRO Australia 2007

The notes and software described here are based on a number of technical, circumstantial or otherwise specified assumptions and parameters. The user must make their own assessment of the suitability for use of the information or material contained in or generated from these notes. To the extent permitted by law, CSIRO excludes all liability to any party for expenses, losses, damages and costs arising directly or indirectly from using these notes and software tools.

---

### **David Gobbett, CSIRO Sustainable Ecosystems**

Phone +61 8 8303 8741

Email [David.Gobbett@csiro.au](mailto:David.Gobbett@csiro.au)

Web <http://www.csiro.au/products/PrecisionViticultureSoftware>